



Data sheet

Sage Intacct Project Intelligence

Streamline your project accounting, track your employee time and performance, and uncover project trends that can boost your profitability

Sage

Optimize project performance with Project Intelligence and streamline your project accounting. Track your employee time, performance, and uncover project trends that can boost your profitability.

Gain real-time insights into employee time and performance.

Project Intelligence provides project managers with real-time insights into employee utilization and profitability through a set of curated dashboards that are built on industry-leading best practices.

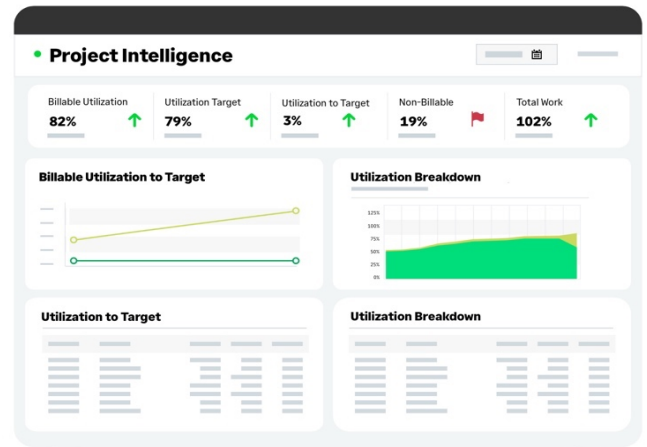
Leveraging these powerful dashboards and reports, you will gain an in-depth understanding of employee efficiency and uncover valuable project trends, empowering you to make more informed business decisions.

Fully automated project metrics

Many companies extract timesheet data to Excel to calculate employee KPIs and manage projects in third-party systems. These practices often lack the timeliness and accuracy to review project health quickly. With Project Intelligence, eliminate manual processes and offer your employees quantifiable metrics to evaluate their performance.

Dynamic dashboards at your fingertips

Project Intelligence provides a comprehensive set of dashboards and reports to evaluate employee performance and availability while also identifying project trends to drive intelligent business decisions.



Utilization

Obtain detailed metrics for individual employees and groups. Determine who is achieving their billable targets, identify those needing more chargeable hours, and support those who might be overallocated.

Realization

Explore the revenue contribution, effective rate, and write-offs of your team members, allowing you to quantify employee performance on more than billable hours.

Advanced Project Analytics

Gauge the health of your projects. Provide crucial project metrics for service leaders and managers, including project hours against the budget, projected efficiency, and core financial metrics such as accounts receivable, revenue, and profit.

Profitability

Evaluate the profitability of your service team through a detailed analysis of the projects, clients, and employees driving revenue. Identify growth opportunities and areas for improvement.

Discover the incredible impact of Project Intelligence and see your business thrive with better productivity and smarter decision-making.



sage.com/us/project-intelligence
(877) 437-7765

Sage

©2023 The Sage Group plc or its licensors. All rights reserved. Sage, Sage Logos, and Sage product and service names mentioned herein are the trademarks of Sage Global Services Limited or its licensors. All other trademarks are the property of their respective owners.