

Web Workbook

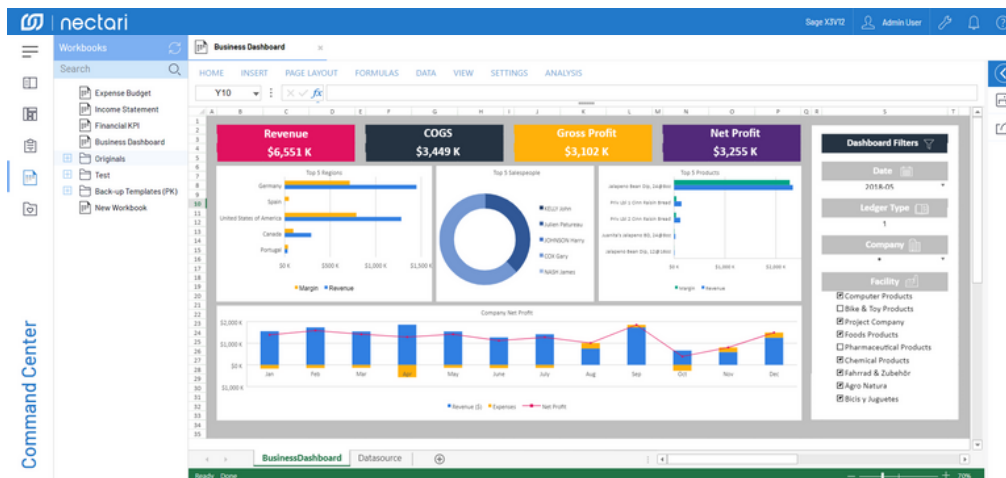
Bringing you the power of the Excel Add-In and so much more.

The Nectari Web Workbook allows users to benefit from the familiar functionalities of Excel and the advanced reporting and analytic capabilities of Nectari. Users will now be able to access their worksheets directly within Nectari.

Optimized for Where you Work

Access your workbooks on any device without opening a second application. You can view your workbooks from your mobile phone and Mac computer and get all your analysis and reporting done in one place – Nectari. Create your report, add images, export copies to Excel, or share with colleagues while maintaining your layout and user permissions.

BUILD DYNAMIC DASHBOARDS IN YOUR WORKSHEETS



Smart Caching

With the first phase of the cache, an AI-based system analyzes your formulas in real-time and optimizes your workbook for you. This saves you the manual work of configuring your references and caching. Comparing different data sets is easier; you can open the same workbook several times. And since all open workbooks share the cache, they also load faster.

Easy Filtering

Use the new filtering options to add multiple filters and filter groups to get as granular as you like. Add more complex filters to calculate things like 12-month rolling and link them to other filters with “and” “or” conditions.

BUILD COMPLEX FILTERS

Dynamic Global Variables

Add any Global Variable in your worksheet and reference it in your calculations. Instead of manually adjusting the cell's value when you access your workbook, the cell gets updated automatically.

Hassle-Free Upgrades

Administrators rejoice! Upgrades are now a breeze. Once you upgrade your server, all users will have access to the latest Web Workbook version, and you won't have to upgrade each workstation individually.

Stay Tuned!

Coming in a future release: Data Extraction Wizard, Smart Cache Level 2, Selection Page, Distribution, Drill-down, Pivot Wizard.

More Cool Features

Create different drop-downs or change a cell to a Date Time Picker, Color Picker, or Slider. Link a Checkbox List to your data and watch your visualizations change as you select items from your list.

CELL TYPE & DROPDOWN OPTIONS

